



CAM UNITS

Summary

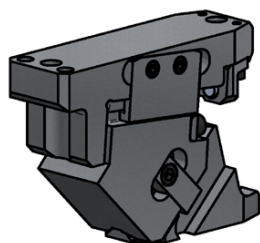
MODEL	WIDTH	0050	0052	0060	0065	0070	0080	0085	0090	0100	0110	0150	0165	0200	0250	0300	0350	0400	0500	0600	0700	0800	0900	1000	Page
		AERIAL CAMS																							
01	ATFA		0052		0065																				II
02	ASDR		0052																						III
03	ACDS		0052																						IV
04	ANCG				0065																				V
05	ASCB	0050			0065		0080					0150													VI
06	ASFK					0080						0150													VII
07	AUKE				0065				0100					0200											VIII
08	ABKL				0065				0100					0200											IX
09	AWBC													0200		0300		0400	0500	0600					X
10	ASGN	0050			0065	0080						0150		0200		0300									XI
11	ASLT																	0400	0500	0600	0700	0800	0900	1000	XII
12	ANRP					0070	0080						0165	0200		0300		0400							XIII
13	ASVX			0060				0085		0110			0165	0200	0250	0300	0350	0400							XIV - XV
DIE MOUNTED CAMS																									
14	LSDH		0052						0090																XVI
15	LKCM		0052		0065					0100		0150		0200	0250	0300		0400	0500	0600					XVII
16	LKBM																								
17	LKCV				0065					0100		0150													XVIII
18	LKBV																								
19	LKCZ				0065					0100		0150													XIX
20	LKBZ																								
21	LSPJ	0050				0080						0150		0200		0300									XX
22	LSLD																		0500	0600	0700	0800	0900	1000	XXI

CAM UNITS

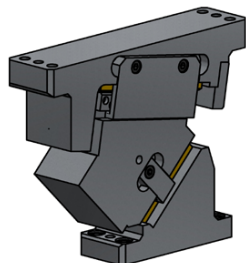
Summary



01 - ATFA



ATFA 0052



ATFA 0065

MOUNT WIDTH (mm)	WORKING FORCE kN - (tons)	
	(1 Million Strokes)	(300.000 Strokes)
52	14.7 (1.5)	29.4 (3.0)
65	68.7 (7.0)	137.3 (14.0)

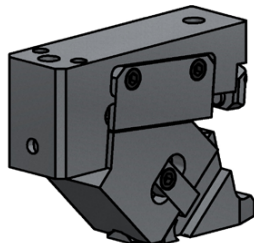
DESCRIPTION

- Aerial cam.
- (ATFA 52) Angles from 0° to 80° with increments of 5°.
- (ATFA 65) Angles from 0° to 75° with increments of 5°.
- "V" shaped sliding for auto-centered.
- Compact design.

PDF - 3D

ATFA	
0052	0065
ATFA 0052 00	ATFA 0065 00
ATFA 0052 05	ATFA 0065 05
ATFA 0052 10	ATFA 0065 10
ATFA 0052 15	ATFA 0065 15
ATFA 0052 20	ATFA 0065 20
ATFA 0052 25	ATFA 0065 25
ATFA 0052 30	ATFA 0065 30
ATFA 0052 35	ATFA 0065 35
ATFA 0052 40	ATFA 0065 40
ATFA 0052 45	ATFA 0065 45
ATFA 0052 50	ATFA 0065 50
ATFA 0052 55	ATFA 0065 55
ATFA 0052 60	ATFA 0065 60
ATFA 0052 65	ATFA 0065 65
ATFA 0052 70	ATFA 0065 70
ATFA 0052 75	ATFA 0065 75
ATFA 0052 80	

02 - ASDR



ASDR 0052

MOUNT WIDTH (mm)	WORKING FORCE kN - (tons)	
	(1 Million Strokes)	(300.000 Strokes)
52	14.7 (1.5)	29.4 (3.0)

DESCRIPTION

- Aerial cam.
- Angles from 0° to 50° with increments of 5°.
- "V" shaped sliding for auto-centered.
- Compact design.
- Longer stroke than ATFA 52.

PDF - 3D

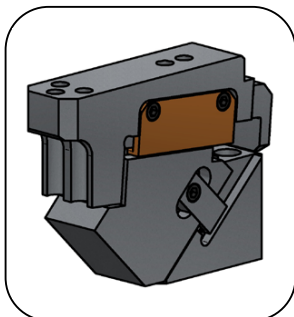
ASDR 0052
<u>ASDR 0052 00</u>
<u>ASDR 0052 05</u>
<u>ASDR 0052 10</u>
<u>ASDR 0052 15</u>
<u>ASDR 0052 20</u>
<u>ASDR 0052 25</u>
<u>ASDR 0052 30</u>
<u>ASDR 0052 35</u>
<u>ASDR 0052 40</u>
<u>ASDR 0052 45</u>
<u>ASDR 0052 50</u>

CAM UNITS

Summary

**AZOL
GAS** 

03 - ACDS

**ACDS 0052**

MOUNT WIDTH (mm)	WORKING FORCE kN - (tons)	
	(1 Million Strokes)	(300.000 Strokes)
52	29.4 (3.0)	58.8 (6.0)

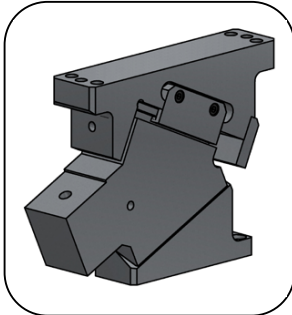
DESCRIPTION

- Aerial cam.
- Angles from 0° to 60° with increments of 5°.
- "V" shaped sliding for auto-centered.
- High return force for extraction.
- Extensible mount length.

PDF - 3D

ACDS 0052
<u>ACDS 0052 00</u>
<u>ACDS 0052 05</u>
<u>ACDS 0052 10</u>
<u>ACDS 0052 15</u>
<u>ACDS 0052 20</u>
<u>ACDS 0052 25</u>
<u>ACDS 0052 30</u>
<u>ACDS 0052 35</u>
<u>ACDS 0052 40</u>
<u>ACDS 0052 45</u>
<u>ACDS 0052 50</u>
<u>ACDS 0052 55</u>
<u>ACDS 0052 60</u>

04 - ANCG



ANCG 0065

MOUNT WIDTH (mm)	WORKING FORCE kN - (tons)	
	(1 Million Strokes)	(300.000 Strokes)
65	14.7 (1.5)	29.4 (3.0)

DESCRIPTION

- Aerial cam.
- Angles from 0° to 25° with increments of 5°.
- "V" shaped sliding for auto-centered.
- Extensible mount length.

PDF - 3D

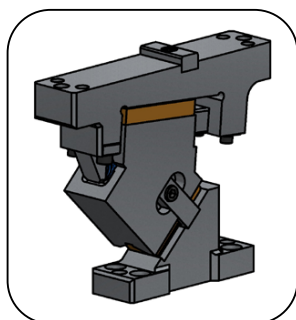
ANCG 0065
<u>ANCG 0065 00</u>
<u>ANCG 0065 05</u>
<u>ANCG 0065 10</u>
<u>ANCG 0065 15</u>
<u>ANCG 0065 20</u>
<u>ANCG 0065 25</u>

CAM UNITS

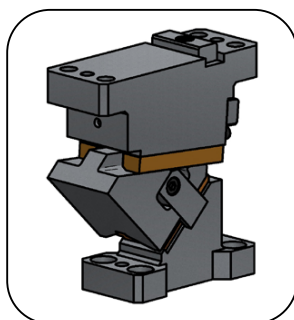
Summary



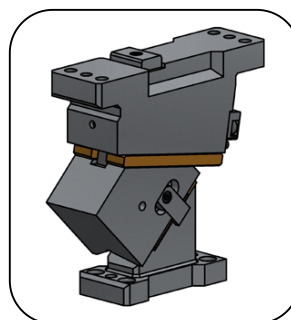
05 - ASCB



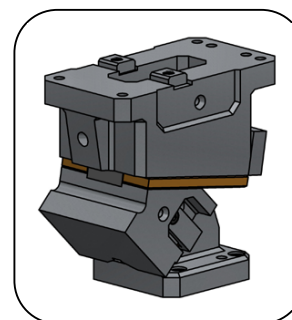
ASCB 0050



ASCB 0065



ASCB 0080



ASCB 0150

MOUNT WIDTH (mm)	WORKING FORCE kN - (tons)	
	(1 Million Strokes)	(300.000 Strokes)
50	19.6 (2.0)	39.2 (4.0)
65	19.6 (2.0)	39.2 (4.0)
80	39.2 (4.0)	78.4 (8.0)
150	88.2 (9.0)	132 (13.5)

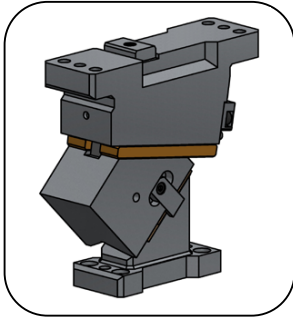
DESCRIPTION

- Aerial cam.
- Angles from 0° to 70° with increments of 5°.
- "V" shaped sliding for auto-centered.
- Same width for cam and mount.
- Extensible mount length.
- Slider easy desassembly from the rear.

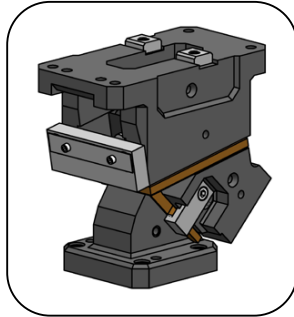
PDF - 3D

ASCB			
0050	0065	0080	0150
<u>ASCB 0050 00</u>	<u>ASCB 0065 00</u>	<u>ASCB 0080 00</u>	<u>ASCB 0150 00</u>
<u>ASCB 0050 05</u>	<u>ASCB 0065 05</u>	<u>ASCB 0080 05</u>	<u>ASCB 0150 05</u>
<u>ASCB 0050 10</u>	<u>ASCB 0065 10</u>	<u>ASCB 0080 10</u>	<u>ASCB 0150 10</u>
<u>ASCB 0050 15</u>	<u>ASCB 0065 15</u>	<u>ASCB 0080 15</u>	<u>ASCB 0150 15</u>
<u>ASCB 0050 20</u>	<u>ASCB 0065 20</u>	<u>ASCB 0080 20</u>	<u>ASCB 0150 20</u>
<u>ASCB 0050 25</u>	<u>ASCB 0065 25</u>	<u>ASCB 0080 25</u>	<u>ASCB 0150 25</u>
<u>ASCB 0050 30</u>	<u>ASCB 0065 30</u>	<u>ASCB 0080 30</u>	<u>ASCB 0150 30</u>
<u>ASCB 0050 35</u>	<u>ASCB 0065 35</u>	<u>ASCB 0080 35</u>	<u>ASCB 0150 35</u>
<u>ASCB 0050 40</u>	<u>ASCB 0065 40</u>	<u>ASCB 0080 40</u>	<u>ASCB 0150 40</u>
<u>ASCB 0050 45</u>	<u>ASCB 0065 45</u>	<u>ASCB 0080 45</u>	<u>ASCB 0150 45</u>
<u>ASCB 0050 50</u>	<u>ASCB 0065 50</u>	<u>ASCB 0080 50</u>	<u>ASCB 0150 50</u>
<u>ASCB 0050 55</u>	<u>ASCB 0065 55</u>	<u>ASCB 0080 55</u>	<u>ASCB 0150 55</u>
<u>ASCB 0050 60</u>	<u>ASCB 0065 60</u>	<u>ASCB 0080 60</u>	<u>ASCB 0150 60</u>
<u>ASCB 0050 65</u>	<u>ASCB 0065 65</u>	<u>ASCB 0080 65</u>	<u>ASCB 0150 65</u>
<u>ASCB 0050 70</u>	<u>ASCB 0065 70</u>	<u>ASCB 0080 70</u>	<u>ASCB 0150 70</u>

06 - ASFK



ASFK 0080



ASFK 0150

MOUNT WIDTH (mm)	WORKING FORCE kN - (tons)	
	(1 Million Strokes)	(300.000 Strokes)
80	54.9 (5.6)	109.8 (11.2)
150	123.5 (12.6)	185.2 (18.9)

DESCRIPTION

- Aerial cam.
- Angles from 0° to 70° with increments of 5°.
- "V" shaped sliding for auto-centered.
- Same width for cam and mount.
- Higher return force than ASCB.
- Slider front prolongable.
- Slider easy desassembly from the rear.

PDF - 3D

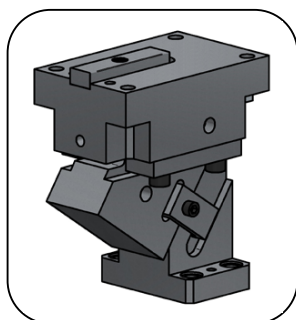
ASFK	
0080	0150
<u>ASFK 0080 00</u>	<u>ASFK 0150 00</u>
<u>ASFK 0080 05</u>	<u>ASFK 0150 05</u>
<u>ASFK 0080 10</u>	<u>ASFK 0150 10</u>
<u>ASFK 0080 15</u>	<u>ASFK 0150 15</u>
<u>ASFK 0080 20</u>	<u>ASFK 0150 20</u>
<u>ASFK 0080 25</u>	<u>ASFK 0150 25</u>
<u>ASFK 0080 30</u>	<u>ASFK 0150 30</u>
<u>ASFK 0080 35</u>	<u>ASFK 0150 35</u>
<u>ASFK 0080 40</u>	<u>ASFK 0150 40</u>
<u>ASFK 0080 45</u>	<u>ASFK 0150 45</u>
<u>ASFK 0080 50</u>	<u>ASFK 0150 50</u>
<u>ASFK 0080 55</u>	<u>ASFK 0150 55</u>
<u>ASFK 0080 60</u>	<u>ASFK 0150 60</u>
<u>ASFK 0080 65</u>	<u>ASFK 0150 65</u>
<u>ASFK 0080 70</u>	<u>ASFK 0150 70</u>

CAM UNITS

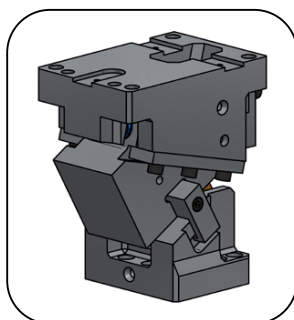
Summary



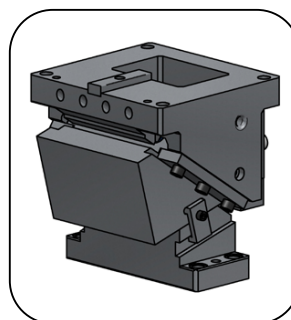
07 - AUKE



AUKE 0065



AUKE 0100



AUKE 0200

MOUNT WIDTH (mm)	WORKING FORCE kN - (tons)	
	(1 Million Strokes)	(300.000 Strokes)
65	19.6 - 29.4 (2.0 - 3.0)	39.2 - 58.8 (4.0 - 6.0)
100	44.1 - 49.0 (4.5 - 5.0)	88.2 - 98.0 (9.0 - 10.0)
200	98.1 - 117.7 (10.0 - 12.0)	196.2 - 235.4 (20.0 - 24.0)

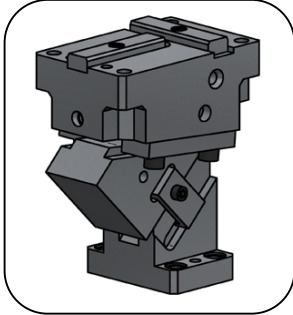
DESCRIPTION

- Aerial cam.
- Angles from 0° to 70° with increments of 5°.
- Rigid flat guides system.
- Slider easy desassembly from the rear.

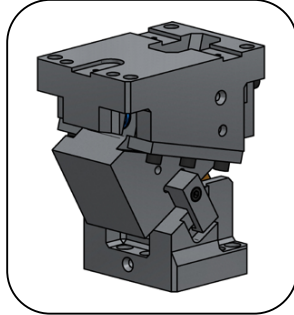
PDF - 3D

AUKE		
0065	0100	0200
<u>AUKE 0065 00</u>	<u>AUKE 0100 00</u>	<u>AUKE 0200 00</u>
<u>AUKE 0065 05</u>	<u>AUKE 0100 05</u>	<u>AUKE 0200 05</u>
<u>AUKE 0065 10</u>	<u>AUKE 0100 10</u>	<u>AUKE 0200 10</u>
<u>AUKE 0065 15</u>	<u>AUKE 0100 15</u>	<u>AUKE 0200 15</u>
<u>AUKE 0065 20</u>	<u>AUKE 0100 20</u>	<u>AUKE 0200 20</u>
<u>AUKE 0065 25</u>	<u>AUKE 0100 25</u>	<u>AUKE 0200 25</u>
<u>AUKE 0065 30</u>	<u>AUKE 0100 30</u>	<u>AUKE 0200 30</u>
<u>AUKE 0065 35</u>	<u>AUKE 0100 35</u>	<u>AUKE 0200 35</u>
<u>AUKE 0065 40</u>	<u>AUKE 0100 40</u>	<u>AUKE 0200 40</u>
<u>AUKE 0065 45</u>	<u>AUKE 0100 45</u>	<u>AUKE 0200 45</u>
<u>AUKE 0065 50</u>	<u>AUKE 0100 50</u>	<u>AUKE 0200 50</u>
<u>AUKE 0065 55</u>	<u>AUKE 0100 55</u>	<u>AUKE 0200 55</u>
<u>AUKE 0065 60</u>	<u>AUKE 0100 60</u>	<u>AUKE 0200 60</u>
<u>AUKE 0065 65</u>	<u>AUKE 0100 65</u>	<u>AUKE 0200 65</u>
<u>AUKE 0065 70</u>	<u>AUKE 0100 70</u>	<u>AUKE 0200 70</u>

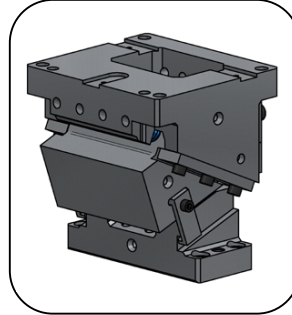
08 - ABKL



ABKL 0065



ABKL 0100



ABKL 0200

MOUNT WIDTH (mm)	WORKING FORCE kN - (tons)	
	(1 Million Strokes)	(300.000 Strokes)
65	19.6 (2.0)	39.2 (4.0)
100	44.1 (4.5)	88.2 (9.0)
200	93.1 (9.5)	186.2 (19.0)

DESCRIPTION

- Aerial cam.
- Angles from 0° to 70° with increments of 5°.
- "V" shaped sliding for auto-centered.
- Slider easy desassembly from the rear.

PDF - 3D

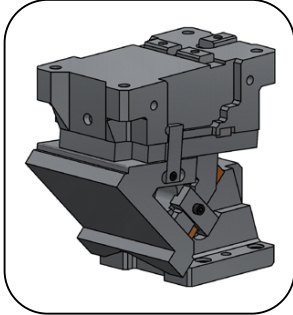
ABKL		
0065	0100	0200
<u>ABKL 0065 00</u>	<u>ABKL 0100 00</u>	<u>ABKL 0200 00</u>
<u>ABKL 0065 05</u>	<u>ABKL 0100 05</u>	<u>ABKL 0200 05</u>
<u>ABKL 0065 10</u>	<u>ABKL 0100 10</u>	<u>ABKL 0200 10</u>
<u>ABKL 0065 15</u>	<u>ABKL 0100 15</u>	<u>ABKL 0200 15</u>
<u>ABKL 0065 20</u>	<u>ABKL 0100 20</u>	<u>ABKL 0200 20</u>
<u>ABKL 0065 25</u>	<u>ABKL 0100 25</u>	<u>ABKL 0200 25</u>
<u>ABKL 0065 30</u>	<u>ABKL 0100 30</u>	<u>ABKL 0200 30</u>
<u>ABKL 0065 35</u>	<u>ABKL 0100 35</u>	<u>ABKL 0200 35</u>
<u>ABKL 0065 40</u>	<u>ABKL 0100 40</u>	<u>ABKL 0200 40</u>
<u>ABKL 0065 45</u>	<u>ABKL 0100 45</u>	<u>ABKL 0200 45</u>
<u>ABKL 0065 50</u>	<u>ABKL 0100 50</u>	<u>ABKL 0200 50</u>
<u>ABKL 0065 55</u>	<u>ABKL 0100 55</u>	<u>ABKL 0200 55</u>
<u>ABKL 0065 60</u>	<u>ABKL 0100 60</u>	<u>ABKL 0200 60</u>
<u>ABKL 0065 65</u>	<u>ABKL 0100 65</u>	<u>ABKL 0200 65</u>
<u>ABKL 0065 70</u>	<u>ABKL 0100 70</u>	<u>ABKL 0200 70</u>

CAM UNITS

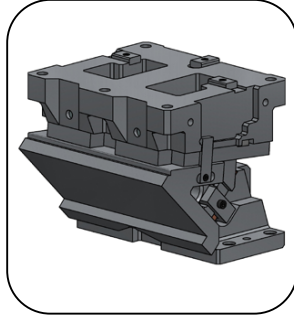
Summary



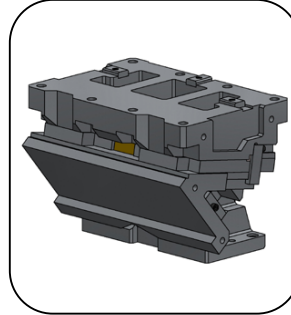
09- AWBC



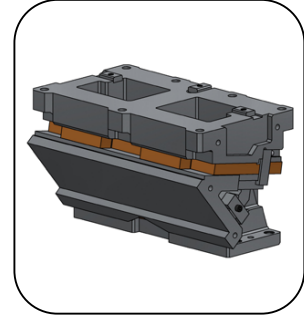
AWBC 0200 / 0300



AWBC 0400



AWBC 0500



AWBC 0600

MOUNT WIDTH (mm)	WORKING FORCE kN - (tons)	
	(1 Million Strokes)	(300.000 Strokes)
200	117.6 (12.0)	235.2 (24.0)
300	196.0 (20.0)	392.0 (40.0)
400	245.0 (25.0)	490.0 (50.0)
500	313.6 (32.0)	627.2 (64.0)
600	392.0 (40.0)	784.0 (80.0)

DESCRIPTION

- Aerial cam.
- Angles from 0° to 60° with increments of 5°.
- "V" shaped sliding for auto-centered.
- Slider easy desassembly from the rear.

PDF - 3D

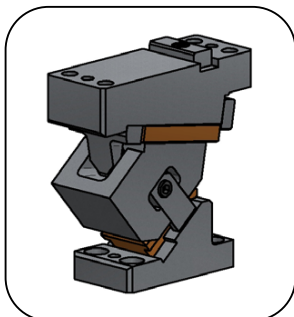
AWBC				
0200	0300	0400	0500	0600
AWBC 0200 00	AWBC 0300 00	AWBC 0400 00	AWBC 0500 00	AWBC 0600 00
AWBC 0200 05	AWBC 0300 05	AWBC 0400 05	AWBC 0500 05	AWBC 0600 05
AWBC 0200 10	AWBC 0300 10	AWBC 0400 10	AWBC 0500 10	AWBC 0600 10
AWBC 0200 15	AWBC 0300 15	AWBC 0400 15	AWBC 0500 15	AWBC 0600 15
AWBC 0200 20	AWBC 0300 20	AWBC 0400 20	AWBC 0500 20	AWBC 0600 20
AWBC 0200 25	AWBC 0300 25	AWBC 0400 25	AWBC 0500 25	AWBC 0600 25
AWBC 0200 30	AWBC 0300 30	AWBC 0400 30	AWBC 0500 30	AWBC 0600 30
AWBC 0200 35	AWBC 0300 35	AWBC 0400 35	AWBC 0500 35	AWBC 0600 35
AWBC 0200 40	AWBC 0300 40	AWBC 0400 40	AWBC 0500 40	AWBC 0600 40
AWBC 0200 45	AWBC 0300 45	AWBC 0400 45	AWBC 0500 45	AWBC 0600 45
AWBC 0200 50	AWBC 0300 50	AWBC 0400 50	AWBC 0500 50	AWBC 0600 50
AWBC 0200 55	AWBC 0300 55	AWBC 0400 55	AWBC 0500 55	AWBC 0600 55
AWBC 0200 60	AWBC 0300 60	AWBC 0400 60	AWBC 0500 60	AWBC 0600 60



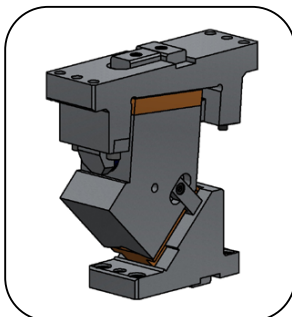
CAM UNITS

Summary

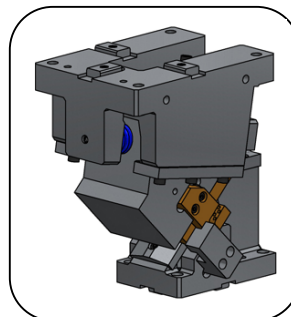
10 - ASGN



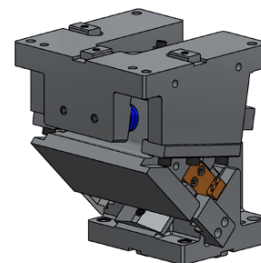
ASGN 0050 / 0065



ASGN 0080



ASGN 0150



ASGN 0200 / 0300

MOUNT WIDTH (mm)	WORKING FORCE kN - (tons)	
	(1 Million Strokes)	(300.000 Strokes)
50	29.4 (3.0)	58.6 (6.0)
65	29.4 (3.0)	58.6 (6.0)
80	49 (5.0)	98.0 (10.0)
150	147.0 (15.0)	294.0 (30.0)
200	147 (15.0)	294.0 (30.0)
300	294.0 (30.0)	588.0 (60.0)

DESCRIPTION

- Aerial cam.
- Angles from 0° to 65° with increments of 5°. (0° to 75° for ASGN 50) (0° to 60° for ASGN 65)
- Rigid flat guides system.
- "V" shaped sliding for auto-centered.
- Slider easy desassembly from the rear. (Except ASGN 0050 y 0065)

PDF - 3D

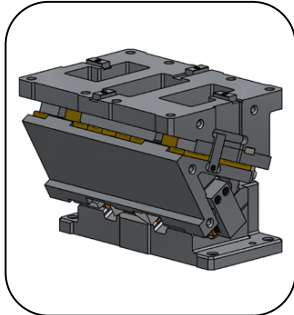
ASGN					
0050	0065	0080	0150	0200	0300
ASGN 0050 00	ASGN 0065 00	ASGN 0080 00	ASGN 0150 00	ASGN 0200 00	ASGN 0300 00
ASGN 0050 05	ASGN 0065 05	ASGN 0080 05	ASGN 0150 05	ASGN 0200 05	ASGN 0300 05
ASGN 0050 10	ASGN 0065 10	ASGN 0080 10	ASGN 0150 10	ASGN 0200 10	ASGN 0300 10
ASGN 0050 15	ASGN 0065 15	ASGN 0080 15	ASGN 0150 15	ASGN 0200 15	ASGN 0300 15
ASGN 0050 20	ASGN 0065 20	ASGN 0080 20	ASGN 0150 20	ASGN 0200 20	ASGN 0300 20
ASGN 0050 25		ASGN 0080 25	ASGN 0150 25	ASGN 0200 25	ASGN 0300 25
ASGN 0050 30	ASGN 0065 30	ASGN 0080 30	ASGN 0150 30	ASGN 0200 30	ASGN 0300 30
ASGN 0050 35		ASGN 0080 35	ASGN 0150 35	ASGN 0200 35	ASGN 0300 35
ASGN 0050 40	ASGN 0065 40	ASGN 0080 40	ASGN 0150 40	ASGN 0200 40	ASGN 0300 40
ASGN 0050 45		ASGN 0080 45	ASGN 0150 45	ASGN 0200 45	ASGN 0300 45
ASGN 0050 50	ASGN 0065 50	ASGN 0080 50	ASGN 0150 50	ASGN 0200 50	ASGN 0300 50
ASGN 0050 55		ASGN 0080 55	ASGN 0150 55	ASGN 0200 55	ASGN 0300 55
ASGN 0050 60	ASGN 0065 60	ASGN 0080 60	ASGN 0150 60	ASGN 0200 60	ASGN 0300 60
ASGN 0050 65		ASGN 0080 65	ASGN 0150 65	ASGN 0200 65	ASGN 0300 65

CAM UNITS

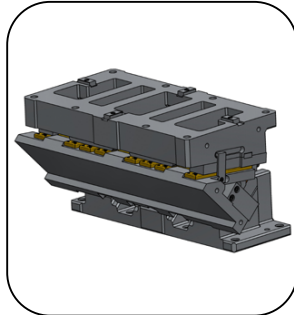
Summary



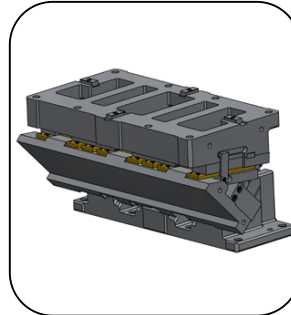
11 - ASLT



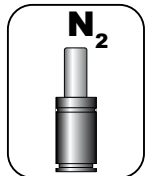
ASLT 0500 / 0600



ASLT 0700 / 0800



ASLT 0900 / 1000



MOUNT WIDTH (mm)	WORKING FORCE kN - (tons)
500 600	137.3 (14.0)
700 800	470.4 (48.0)
900 1000	627.2 (64.0)

DESCRIPTION

- Aerial cam.
- Angles from 0° to 60° with increments of 5°.
- "V" shaped sliding for auto-centered.
- Slider easy disassembly from the rear.
- Gas spring equipped unit.

PDF - 3D

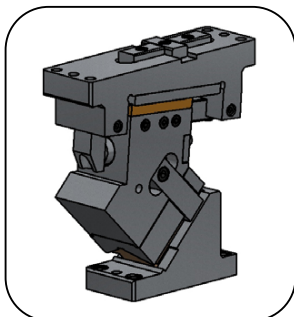
ASLT					
0500	0600	0700	0800	0900	1000
ASLT 0500 00	ASLT 0600 00	ASLT 0700 00	ASLT 0800 00	ASLT 0900 00	ASLT 1000 00
ASLT 0500 05	ASLT 0600 05	ASLT 0700 05	ASLT 0800 05	ASLT 0900 05	ASLT 1000 05
ASLT 0500 10	ASLT 0600 10	ASLT 0700 10	ASLT 0800 10	ASLT 0900 10	ASLT 1000 10
ASLT 0500 15	ASLT 0600 15	ASLT 0700 15	ASLT 0800 15	ASLT 0900 15	ASLT 1000 15
ASLT 0500 20	ASLT 0600 20	ASLT 0700 20	ASLT 0800 20	ASLT 0900 20	ASLT 1000 20
ASLT 0500 25	ASLT 0600 25	ASLT 0700 25	ASLT 0800 25	ASLT 0900 25	ASLT 1000 25
ASLT 0500 30	ASLT 0600 30	ASLT 0700 30	ASLT 0800 30	ASLT 0900 30	ASLT 1000 30
ASLT 0500 35	ASLT 0600 35	ASLT 0700 35	ASLT 0800 35	ASLT 0900 35	ASLT 1000 35
ASLT 0500 40	ASLT 0600 40	ASLT 0700 40	ASLT 0800 40	ASLT 0900 40	ASLT 1000 40
ASLT 0500 45	ASLT 0600 45	ASLT 0700 45	ASLT 0800 45	ASLT 0900 45	ASLT 1000 45
ASLT 0500 50	ASLT 0600 50	ASLT 0700 50	ASLT 0800 50	ASLT 0900 50	ASLT 1000 50
ASLT 0500 55	ASLT 0600 55	ASLT 0700 55	ASLT 0800 55	ASLT 0900 55	ASLT 1000 55
ASLT 0500 60	ASLT 0600 60	ASLT 0700 60	ASLT 0800 60	ASLT 0900 60	ASLT 1000 60



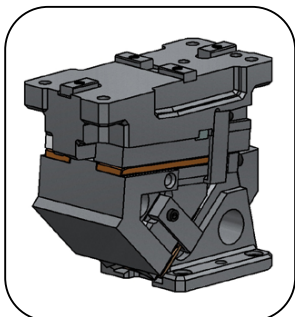
CAM UNITS

Summary

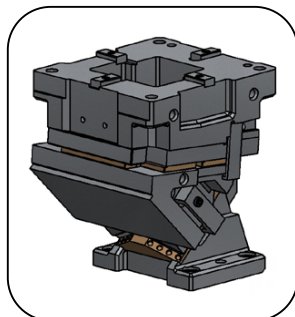
12 - ANRP



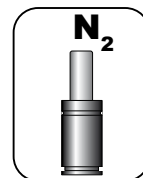
ANRP 0070 / 0080



ANRP 0165 / 0200



ANRP 0300 / 0400



MOUNT WIDTH (mm)	WORKING FORCE kN - (tons)
70	98.1 (10.0)
80	166.7 (17.0)
165	294.2 (30.0)
200	353.0 (36.0)
300	451.1 (46.0)
400	

DESCRIPTION

- Aerial cam.
- Angles from 0° to 60° with increments of 5°.
- Rigid flat guides system.
- "V" shaped sliding for auto-centered.
- Optional gas spring
- According to NAAMS.

PDF - 3D

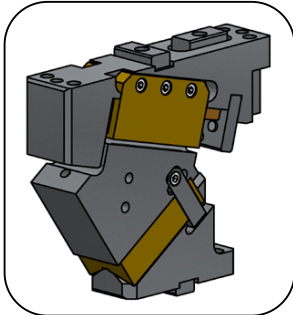
ANRP					
0070	0080	0165	0200	0300	0400
ANRP 0070 00	ANRP 0080 00	ANRP 0165 00	ANRP 0200 00	ANRP 0300 00	ANRP 0400 00
ANRP 0070 05	ANRP 0080 05	ANRP 0165 05	ANRP 0200 05	ANRP 0300 05	ANRP 0400 05
ANRP 0070 10	ANRP 0080 10	ANRP 0165 10	ANRP 0200 10	ANRP 0300 10	ANRP 0400 10
ANRP 0070 15	ANRP 0080 15	ANRP 0165 15	ANRP 0200 15	ANRP 0300 15	ANRP 0400 15
ANRP 0070 20	ANRP 0080 20	ANRP 0165 20	ANRP 0200 20	ANRP 0300 20	ANRP 0400 20
ANRP 0070 25	ANRP 0080 25	ANRP 0165 25	ANRP 0200 25	ANRP 0300 25	ANRP 0400 25
ANRP 0070 30	ANRP 0080 30	ANRP 0165 30	ANRP 0200 30	ANRP 0300 30	ANRP 0400 30
ANRP 0070 35	ANRP 0080 35	ANRP 0165 35	ANRP 0200 35	ANRP 0300 35	ANRP 0400 35
ANRP 0070 40	ANRP 0080 40	ANRP 0165 40	ANRP 0200 40	ANRP 0300 40	ANRP 0400 40
ANRP 0070 45	ANRP 0080 45	ANRP 0165 45	ANRP 0200 45	ANRP 0300 45	ANRP 0400 45
ANRP 0070 50	ANRP 0080 50	ANRP 0165 50	ANRP 0200 50	ANRP 0300 50	ANRP 0400 50
ANRP 0070 55	ANRP 0080 55	ANRP 0165 55	ANRP 0200 55	ANRP 0300 55	ANRP 0400 55
ANRP 0070 60	ANRP 0080 60	ANRP 0165 60	ANRP 0200 60	ANRP 0300 60	ANRP 0400 60

CAM UNITS

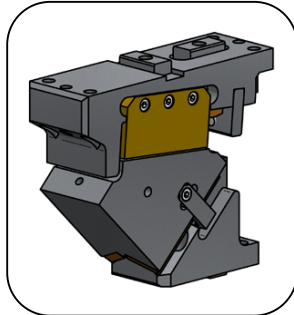
Summary



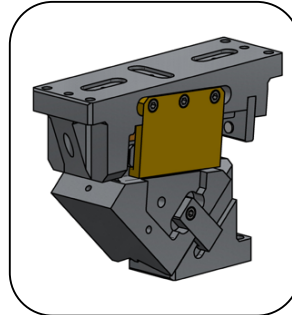
13 - ASVX



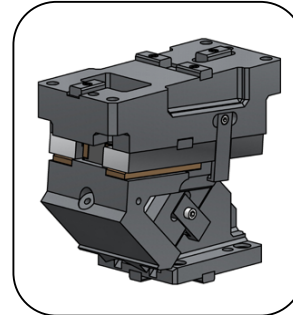
ASVX 0060



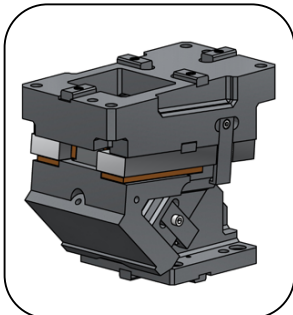
ASVX 0085



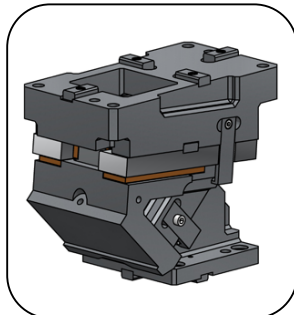
ASVX 0110



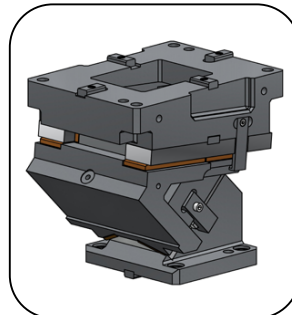
ASVX 0165



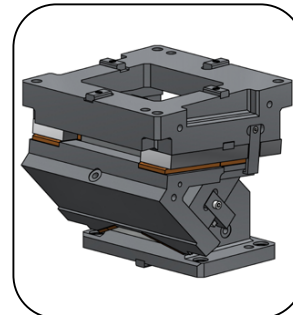
ASVX 0200



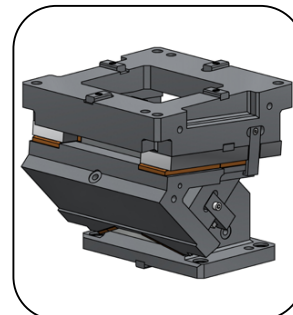
ASVX 0250



ASVX 0300

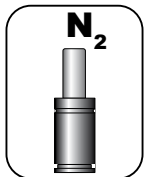


ASVX 0350



ASVX 0400

MOUNT WIDTH (mm)	WORKING FORCE kN - (tons)
60	75.0 (7.6)
85	100.0 (10.2)
110	150.0 (15.3)
165	171.0 (17.4)
200	218.0 (22.2)
300	364.0 (37.1)
350	405.0 (41.1)
400	450.0 (45.9)



DESCRIPTION

- Aerial cam.
- Angles from 0° to 75° with increments of 5°.
- Rigid flat guides system.
- "V" shaped sliding for auto-centered.
- Gas spring equipped unit.
- According to VDI-BAK.

13 - ASVX

PDF - 3D

ASVX				
0060	0085	0110	0165	0200
<u>ASVX 0060 00</u>	<u>ASVX 0085 00</u>	<u>ASVX 0110 00</u>	<u>ASVX 0165 00</u>	<u>ASVX 0200 00</u>
<u>ASVX 0060 05</u>	<u>ASVX 0085 05</u>	<u>ASVX 0110 05</u>	<u>ASVX 0165 05</u>	<u>ASVX 0200 05</u>
<u>ASVX 0060 10</u>	<u>ASVX 0085 10</u>	<u>ASVX 0110 10</u>	<u>ASVX 0165 10</u>	<u>ASVX 0200 10</u>
<u>ASVX 0060 15</u>	<u>ASVX 0085 15</u>	<u>ASVX 0110 15</u>	<u>ASVX 0165 15</u>	<u>ASVX 0200 15</u>
<u>ASVX 0060 20</u>	<u>ASVX 0085 20</u>	<u>ASVX 0110 20</u>	<u>ASVX 0165 20</u>	<u>ASVX 0200 20</u>
<u>ASVX 0060 25</u>	<u>ASVX 0085 25</u>	<u>ASVX 0110 25</u>	<u>ASVX 0165 25</u>	<u>ASVX 0200 25</u>
<u>ASVX 0060 30</u>	<u>ASVX 0085 30</u>	<u>ASVX 0110 30</u>	<u>ASVX 0165 30</u>	<u>ASVX 0200 30</u>
<u>ASVX 0060 35</u>	<u>ASVX 0085 35</u>	<u>ASVX 0110 35</u>	<u>ASVX 0165 35</u>	<u>ASVX 0200 35</u>
<u>ASVX 0060 40</u>	<u>ASVX 0085 40</u>	<u>ASVX 0110 40</u>	<u>ASVX 0165 40</u>	<u>ASVX 0200 40</u>
<u>ASVX 0060 45</u>	<u>ASVX 0085 45</u>	<u>ASVX 0110 45</u>	<u>ASVX 0165 45</u>	<u>ASVX 0200 45</u>
<u>ASVX 0060 50</u>	<u>ASVX 0085 50</u>	<u>ASVX 0110 50</u>	<u>ASVX 0165 50</u>	<u>ASVX 0200 50</u>
<u>ASVX 0060 55</u>	<u>ASVX 0085 55</u>	<u>ASVX 0110 55</u>	<u>ASVX 0165 55</u>	<u>ASVX 0200 55</u>
<u>ASVX 0060 60</u>	<u>ASVX 0085 60</u>	<u>ASVX 0110 60</u>	<u>ASVX 0165 60</u>	<u>ASVX 0200 60</u>
<u>ASVX 0060 65</u>	<u>ASVX 0085 65</u>	<u>ASVX 0110 65</u>	<u>ASVX 0165 65</u>	<u>ASVX 0200 65</u>
<u>ASVX 0060 70</u>	<u>ASVX 0085 70</u>	<u>ASVX 0110 70</u>	<u>ASVX 0165 70</u>	<u>ASVX 0200 70</u>
<u>ASVX 0060 75</u>	<u>ASVX 0085 75</u>	<u>ASVX 0110 75</u>	<u>ASVX 0165 75</u>	<u>ASVX 0200 75</u>

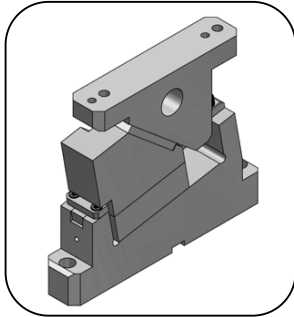
ASVX			
0250	0300	0350	0400
<u>ASVX 0250 00</u>	<u>ASVX 0300 00</u>	<u>ASVX 0350 00</u>	<u>ASVX 0400 00</u>
<u>ASVX 0250 05</u>	<u>ASVX 0300 05</u>	<u>ASVX 0350 05</u>	<u>ASVX 0400 05</u>
<u>ASVX 0250 10</u>	<u>ASVX 0300 10</u>	<u>ASVX 0350 10</u>	<u>ASVX 0400 10</u>
<u>ASVX 0250 15</u>	<u>ASVX 0300 15</u>	<u>ASVX 0350 15</u>	<u>ASVX 0400 15</u>
<u>ASVX 0250 20</u>	<u>ASVX 0300 20</u>	<u>ASVX 0350 20</u>	<u>ASVX 0400 20</u>
<u>ASVX 0250 25</u>	<u>ASVX 0300 25</u>	<u>ASVX 0350 25</u>	<u>ASVX 0400 25</u>
<u>ASVX 0250 30</u>	<u>ASVX 0300 30</u>	<u>ASVX 0350 30</u>	<u>ASVX 0400 30</u>
<u>ASVX 0250 35</u>	<u>ASVX 0300 35</u>	<u>ASVX 0350 35</u>	<u>ASVX 0400 35</u>
<u>ASVX 0250 40</u>	<u>ASVX 0300 40</u>	<u>ASVX 0350 40</u>	<u>ASVX 0400 40</u>
<u>ASVX 0250 45</u>	<u>ASVX 0300 45</u>	<u>ASVX 0350 45</u>	<u>ASVX 0400 45</u>
<u>ASVX 0250 50</u>	<u>ASVX 0300 50</u>	<u>ASVX 0350 50</u>	<u>ASVX 0400 50</u>
<u>ASVX 0250 55</u>	<u>ASVX 0300 55</u>	<u>ASVX 0350 55</u>	<u>ASVX 0400 55</u>
<u>ASVX 0250 60</u>	<u>ASVX 0300 60</u>	<u>ASVX 0350 60</u>	<u>ASVX 0400 60</u>
<u>ASVX 0250 65</u>	<u>ASVX 0300 65</u>	<u>ASVX 0350 65</u>	<u>ASVX 0400 65</u>
<u>ASVX 0250 70</u>	<u>ASVX 0300 70</u>	<u>ASVX 0350 70</u>	<u>ASVX 0400 70</u>
<u>ASVX 0250 75</u>	<u>ASVX 0300 75</u>	<u>ASVX 0350 75</u>	<u>ASVX 0400 75</u>

CAM UNITS

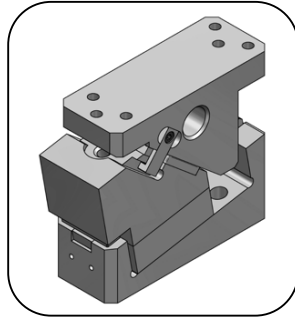
Summary



14 - LSDH



LSDH 0052



LSDH 0090

MOUNT WIDTH (mm)	WORKING FORCE kN - (tons)	
	(1 Million Strokes)	(300.000 Strokes)
52	19.6 (2.0)	39.2 (4.0)
90	38.2 (3.9)	76.4 (7.8)

DESCRIPTION

- Die mounted cam.
- Angles from 0° to 20° with increments of 5°. (0° to 15° for LSDH 90)
- Extensible mount length (only for LSDH 90).

PDF - 3D

LSDH	
0052	0090
LSDH 0052 00	LSDH 0090 00
LSDH 0052 05	LSDH 0090 05
LSDH 0052 10	LSDH 0090 10
LSDH 0052 15	LSDH 0090 15
LSDH 0052 20	

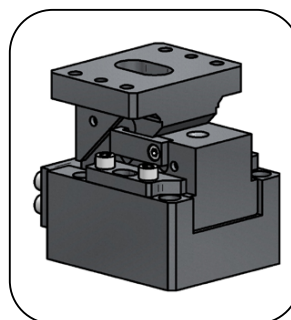


CAM UNITS

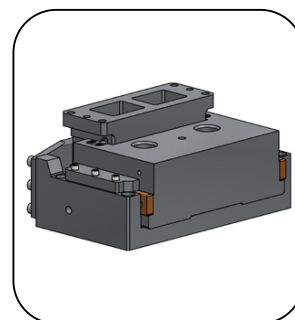
Summary

15 - LKCM

MOUNT WIDTH (mm)	WORKING FORCE kN - (tons)	
	(1 Million Strokes)	(300.000 Strokes)
52	14.7 (1.5)	29.4 (3.0)
65	19.6 (2.0)	39.2 (4.0)
100	29.4 (3.0)	58.8 (6.0)
150	58.8 (6.0)	88.2 (9.0)
200	78.4 (8.0)	117.6 (12.0)
250	98.0 (10.0)	147.0 (15.0)
300	117.6 (12.0)	176.4 (18.0)
400	137.2 (14.0)	205.8 (21.0)
500	137.2 (14.0)	205.8 (21.0)
600	137.2 (14.0)	205.8 (21.0)



LKCM 0052
LKCM 0065
LKCM 0100
LKCM 0150



LKCM 0200
LKCM 0250
LKCM 0300
LKCM 0400
LKCM 0500
LKCM 0600

DESCRIPTION

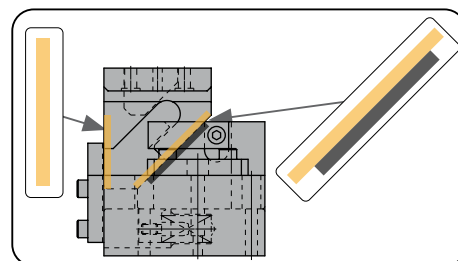
- Die mounted cam.
- 0° Horizontal cam.

PDF - 3D

LKCM				
0052	0065	0100	0150	0200
<u>LKCM 0052 25</u>				
<u>LKCM 0052 40</u>	<u>LKCM 0065 40</u>	<u>LKCM 0100 40</u>	<u>LKCM 0150 40</u>	<u>LKCM 0200 40</u>
<u>LKCM 0052 60</u>	<u>LKCM 0065 60</u>	<u>LKCM 0100 60</u>	<u>LKCM 0150 60</u>	<u>LKCM 0200 60</u>
		<u>LKCM 0100 80</u>		

LKCM				
0250	0300	0400	0500	0600
<u>LKCM 0250 40</u>	<u>LKCM 0300 40</u>			
<u>LKCM 0250 60</u>	<u>LKCM 0300 60</u>	<u>LKCM 0400 60</u>	<u>LKCM 0500 60</u>	<u>LKCM 0600 60</u>

16 - LKBM

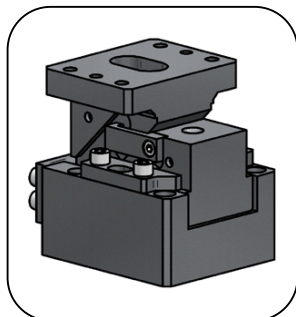


CAM UNITS

Summary



17 - LKCV



LKCV 0065
LKCV 0100
LKCV 0150

MOUNT WIDTH (mm)	WORKING FORCE kN - (tons)	
	(1 Million Strokes)	(300.000 Strokes)
65	19.6 (2.0)	39.2 (4.0)
100	39.2 (4.0)	78.4 (8.0)
150	64.7 (6.6)	98.0 (10.0)

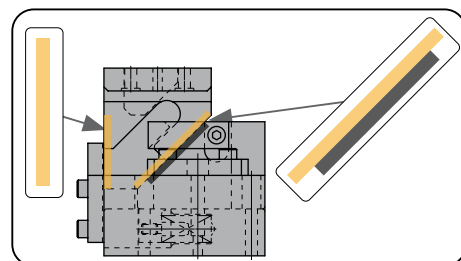
DESCRIPTION

- Die mounted cam.
- Angles from 5° to 20° with increments of 5°.
- 45mm Stroke.

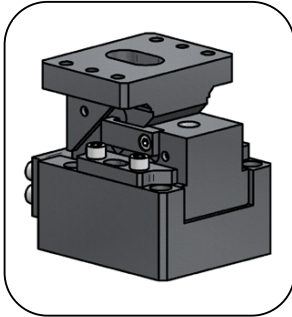
PDF - 3D

LKCV		
0065	0100	0150
<u>LKCV 0065 05</u>	<u>LKCV 0100 05</u>	<u>LKCV 0150 05</u>
<u>LKCV 0065 10</u>	<u>LKCV 0100 10</u>	<u>LKCV 0150 10</u>
<u>LKCV 0065 15</u>	<u>LKCV 0100 15</u>	<u>LKCV 0150 15</u>
<u>LKCV 0065 20</u>	<u>LKCV 0100 20</u>	<u>LKCV 0150 20</u>

18 - LKBV



19 - LKCZ



LKCZ 0065
LKCZ 0100
LKCZ 0150

MOUNT WIDTH (mm)	WORKING FORCE kN - (tons)	
	(1 Million Strokes)	(300.000 Strokes)
65	19.6 (2.0)	39.2 (4.0)
100	39.2 (4.0)	78.4 (8.0)
150	64.7 (6.6)	98.0 (10.0)

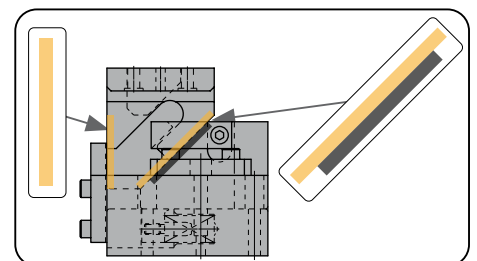
DESCRIPTION

- Die mounted cam.
- Angles from 5° to 20° with increments of 5°.
- 70mm Stroke.

PDF - 3D

LKCZ		
0065	0100	0150
<u>LKCZ 0065 05</u>	<u>LKCZ 0100 05</u>	<u>LKCZ 0150 05</u>
<u>LKCZ 0065 10</u>	<u>LKCZ 0100 10</u>	<u>LKCZ 0150 10</u>
<u>LKCZ 0065 15</u>	<u>LKCZ 0100 15</u>	<u>LKCZ 0150 15</u>
<u>LKCZ 0065 20</u>	<u>LKCZ 0100 20</u>	<u>LKCZ 0150 20</u>

20 - LKBZ

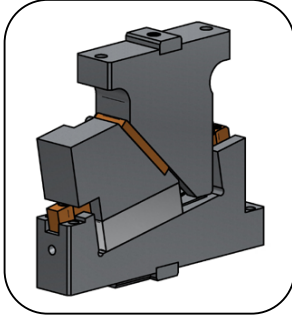


CAM UNITS

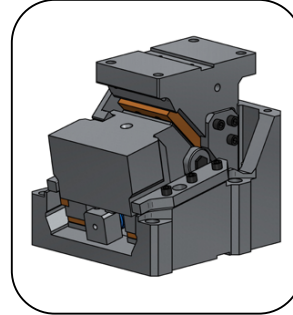
Summary



21 - LSPJ



LSPJ 0050
LSPJ 0080
LSPJ 0150



LSPJ 0200
LSPJ 0300

MOUNT WIDTH (mm)	WORKING FORCE kN - (tons)
50	14.7.0 (1.5)
80	35.3 (3.6)
150	117.6 (12.0)
200	147.0 (15.0)
300	294.0 (30.0)

DESCRIPTION

- Die mounted cam.
- Angles from 0° to 30° with increments of 5°.
- Rigid guides system.

PDF - 3D

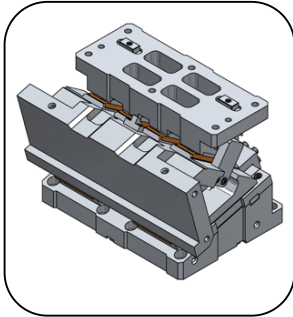
LSPJ				
0050	0080	0150	0200	0300
<u>LSPJ 0050 00</u>	<u>LSPJ 0080 00</u>	<u>LSPJ 0150 00</u>	<u>LSPJ 0200 00</u>	<u>LSPJ 0300 00</u>
<u>LSPJ 0050 05</u>	<u>LSPJ 0080 05</u>	<u>LSPJ 0150 05</u>	<u>LSPJ 0200 05</u>	<u>LSPJ 0300 05</u>
<u>LSPJ 0050 10</u>	<u>LSPJ 0080 10</u>	<u>LSPJ 0150 10</u>	<u>LSPJ 0200 10</u>	<u>LSPJ 0300 10</u>
<u>LSPJ 0050 15</u>	<u>LSPJ 0080 15</u>	<u>LSPJ 0150 15</u>	<u>LSPJ 0200 15</u>	<u>LSPJ 0300 15</u>
<u>LSPJ 0050 20</u>	<u>LSPJ 0080 20</u>	<u>LSPJ 0150 20</u>	<u>LSPJ 0200 20</u>	<u>LSPJ 0300 20</u>
<u>LSPJ 0050 25</u>	<u>LSPJ 0080 25</u>	<u>LSPJ 0150 25</u>	<u>LSPJ 0200 25</u>	<u>LSPJ 0300 25</u>
<u>LSPJ 0050 30</u>	<u>LSPJ 0080 30</u>	<u>LSPJ 0150 30</u>	<u>LSPJ 0200 30</u>	<u>LSPJ 0300 30</u>



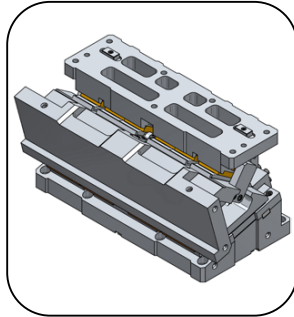
CAM UNITS

Summary

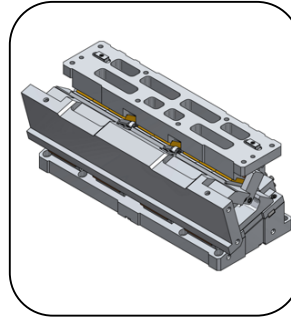
22 - LSLD



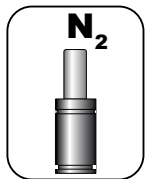
LSLD 0500
LSLD 0600



LSLD 0700
LSLD 0800



LSLD 0900
LSLD 1000



MOUNT WIDTH (mm)	WORKING FORCE kN - (tons)
500 600	313.6 (32.0)
700 800	470.4 (48.0)
900 1000	627.2 (64.0)

DESCRIPTION

- Die mounted cam.
- Angles from 0° to 20° with increments of 5°.
- Rigid guides system.
- Gas spring equipped unit.

PDF - 3D

LSLD					
0500	0600	0700	0800	0900	1000
LSLD 0500 00	LSLD 0600 00	LSLD 0700 00	LSLD 0800 00	LSLD 0900 00	LSLD 1000 00
LSLD 0500 05	LSLD 0600 05	LSLD 0700 05	LSLD 0800 05	LSLD 0900 05	LSLD 1000 05
LSLD 0500 10	LSLD 0600 10	LSLD 0700 10	LSLD 0800 10	LSLD 0900 10	LSLD 1000 10
LSLD 0500 15	LSLD 0600 15	LSLD 0700 15	LSLD 0800 15	LSLD 0900 15	LSLD 1000 15
LSLD 0500 20	LSLD 0600 20	LSLD 0700 20	LSLD 0800 20	LSLD 0900 20	LSLD 1000 20